

Conti-Lines Coastal nv

Sneeuwbeslaan 14
B 2610 Wilrijk (Antwerp)



BASICS

Built:	2024, GSP Gröningen (NI)	Flag / Homeport	Belgium / Antwerp
Main Engine	1040 kW	Bow thruster	265 kW (360°)
Type:	MPP, full BOX, Open Hatch, Open Top, SID or part TD, ctrs on deck, Ice Class ii, stanchions.		
CLASS NOTATIONS LR	±100A1, General Cargo Ship, ± LMC, UMS, SCM, IWS, strengthened for heavy cargoes, TBD Timber. Deck Cargoes, Bottom strengthening for loading and unloading aground. Carriage of Dangerous goods (as per appendix), Open Top.		
Max/Min speed	11.1 / 4.0 knots laden.		

CL Flanders IMO 9969455 **ONLQ**
CL Nogaro IMO 9969493 **ONLR**

DIMENSIONS AND MAIN DATA

GT / NT	2593 / 1212	LOA / LBPP	88.00 m / 84.98 m
SDWAT	abt 3615 mt	BOA / B MOULDED	13.39 m / 13.35 m
Summer SW Draft	4.913 m	Moulded Depth	7.05 m
Winter SW Draft	4.761 m	TPC / FWA	10.98 / 111 mm
OT max SW Draft	4.300 m	H Waterline THC	6.05 m (Ballast)
SDWCC wog	3485 mt	Keel to highest point	19.50 m (Collapsed mast).
WDWCC wog	3370 mt	Airdraft in ballast	16.05 m (Collapsed mast).

HATCH AND HOLD

HOLD(S) / HATCHE(S)	1 / 1		
HATCHCOVERS	Tot area:	62.62 m x 11.07 m / 10 x loose pontoons with sequential opening.	
	Clear opening	62.27 m x 10.80 m - 100% OPENHATCH (HC + BHD ashore)	
	Clear opening	49.27 m x 10.80 m – HC pontoons stacked F and A	
	Clear opening	43.00 m x 10.80 m – Open Top seagoing configuration	
HOLD DIMENSIONS	62.30 m x 10.80 m x 7.762 m monkey islands P+S Fore 3.50 x 0.675 X 4.83 & Aft 2.10 x 1.375 x 1.00		
SHOE BOX SECTIONS	56.70 m x 10.80 m on largest breadth + 3.50 m x 9.45 m Fore + 2.10 m x 8.05 m Aft.		
Hold Capacity	5060.487 CBM / 182,000 CBFT with BHD stored in hold aft.		

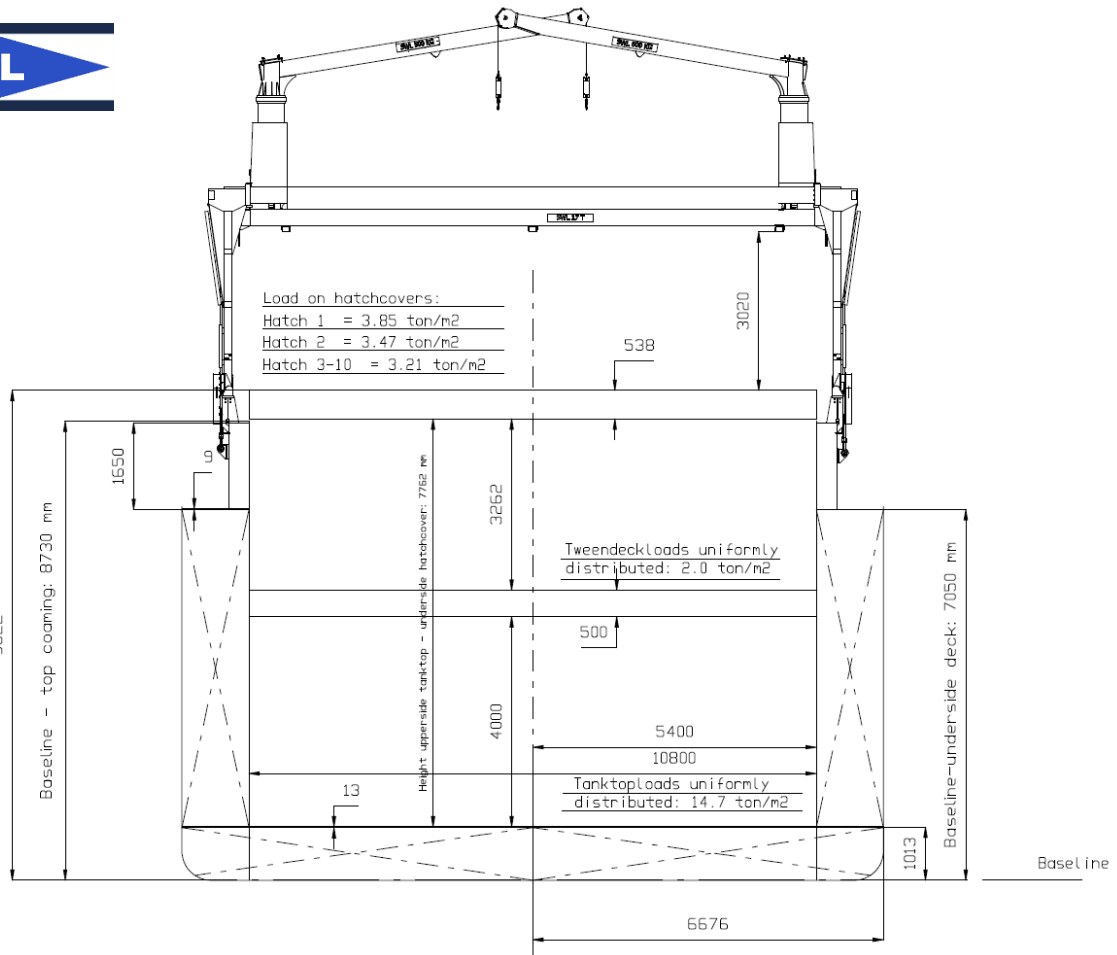
LOADING CAPACITIES

VESSEL HAS 2 MOVABLE GRAIN BULKHEAD (4 SECTIONS) WHICH CAN BE POSITIONED IN 7 DIFFERENT VERTICAL POSITIONS.
VESSEL HAS 2 VERTICAL BULKHEAD SECTIONS WHICH CAN BE POSITIONED AS TD PONTOONS AT 10 DIFFERENT POSITIONS.
VESSEL HAS 54 GALVANIZED STEEL STANCHIONS + LASHING BOLLARD AT EACH STIFFENER FOR LOGS / TIMBER DECK CARGOES.
VESSEL CAN LOAD STEEL COILS UP TO 45 mt U.W.
VESSEL IS OPEN TOP CERTIFIED.
STRENGTHS: TANKTOP 14.75 mt/m² - TWEENDECKS 2.00 mt/m² - HATCHCOVER PONTOONS 3.21 mt/m²

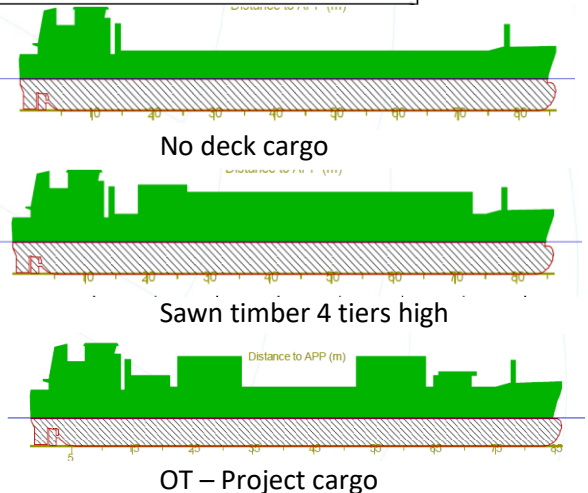
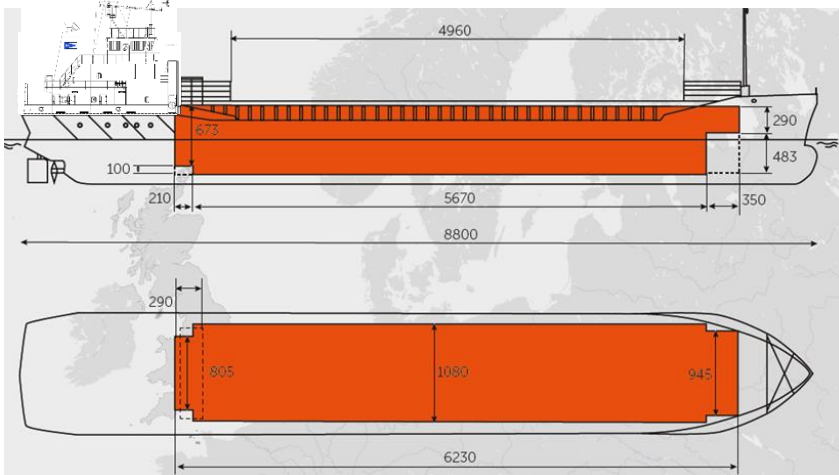
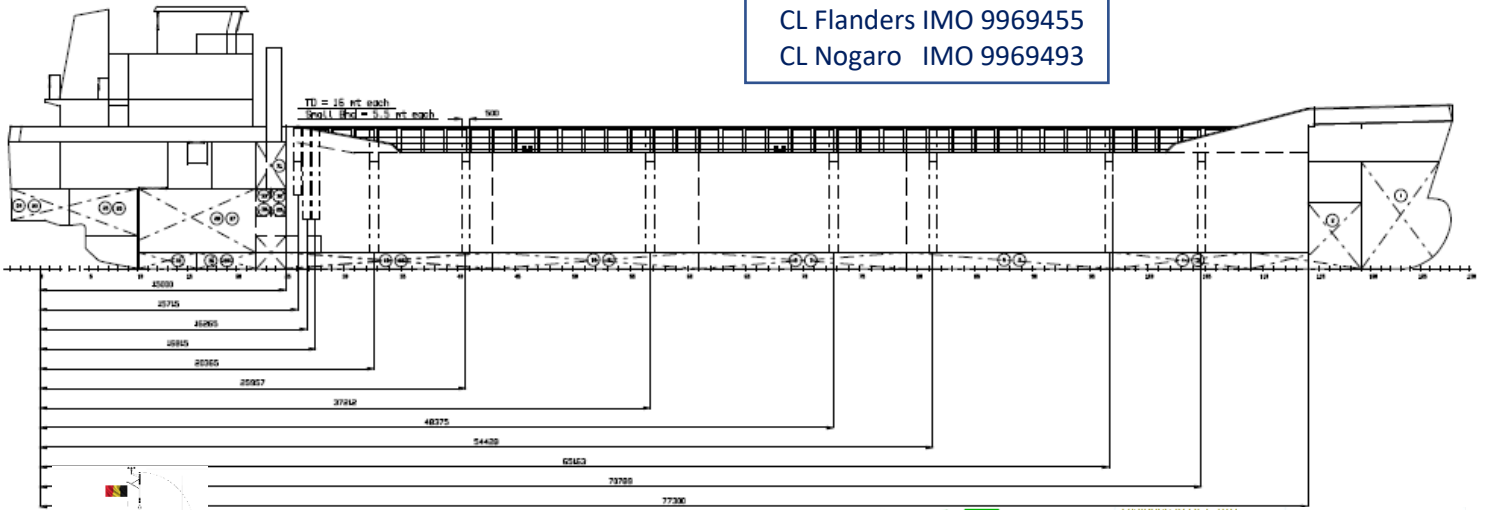
COMMUNICATIONS

CL Flanders: CL-Flanders@debockmaritiem.nl +31 6 25517953
CL Nogaro: CL-Nogaro@debockmaritiem.nl + 31 6

All details are given in good faith and believed to be correct, however, always "about" and without guarantee.



GS 3700 ECOFREIGHTER
 CL Flanders IMO 9969455
 CL Nogaro IMO 9969493



All details are given in good faith and believed to be correct, however, always "about" and without guarantee.